

Access to Information Policy

The screenshot shows the World Bank's website with a navigation menu at the top. The main header features a blue banner with the text "Access to Information" and a search bar. Below the banner, there is a sidebar on the left with a "Quick Links" section and a main content area. The main content area includes a photograph of people looking at documents, a caption, and a paragraph of text. On the right side, there is a vertical list of four links: "Newly Disclosed Documents", "Recently Declassified Documents", "Simultaneous Disclosure", and "Submit Request for Information".

The World Bank Home • Site Map • Index • FAQs • Contact Us

About Countries Data & Research Learning News Projects & Operations Publications Topics

Search All GO

Home > Projects & Operations > Access to Information [Email](#) [Print](#)

• العربية • русский
• Français • Español
• 中文 • Português

Overview
Access to Information (AI) Policy
AI Handbook
AI Committee
AI Appeals Process
AI Appeals Board
Reports and Publications

Quick Links

- ▶ Translation Framework
- ▶ InfoShop
- ▶ Public Information Centers
- ▶ Depository Libraries
- ▶ Archives
- ▶ World Bank InfoFinder

Access to Information

Photo: Willa Hertz/Inter-American Development Bank

The World Bank Policy on Access to Information sets forth a groundbreaking change in how the World Bank makes information available to the public. Now the public can get more information than ever before—information about projects under preparation, projects under implementation, analytic and advisory activities.

- [Newly Disclosed Documents](#)
- [Recently Declassified Documents](#)
- [Simultaneous Disclosure](#)
- [Submit Request for Information](#)

data.worldbank.org



THE WORLD BANK
Working for a World Free of Poverty

English Español Français Português عربي 中文

GO

ABOUT DATA RESEARCH LEARNING NEWS PROJECTS & OPERATIONS PUBLICATIONS COUNTRIES TOPICS

Data

By Country By Topic Indicators Data Catalog Microdata Blog News About For Developers Products

This page in English Español Français العربية 中文

SHARE

Kenya

Sub-Saharan Africa
(developing only)

GDP (current US\$)
\$33.62 billion 2011

Income level
Low income

Population, total
41.61 million 2011

BROWSE

- World Development Indicators
- Projects & Operations
- Finances
- Surveys
- Climate

World Development Indicators

Graph, map and compare more than 1,000 time series indicators from the World Development Indicators and more than 5,000 indicators more from other collections such as Gender Statistics, African Development Indicators or Education Statistics.

DATABANK

DOWNLOAD DATA

School enrollment, primary (% gross)

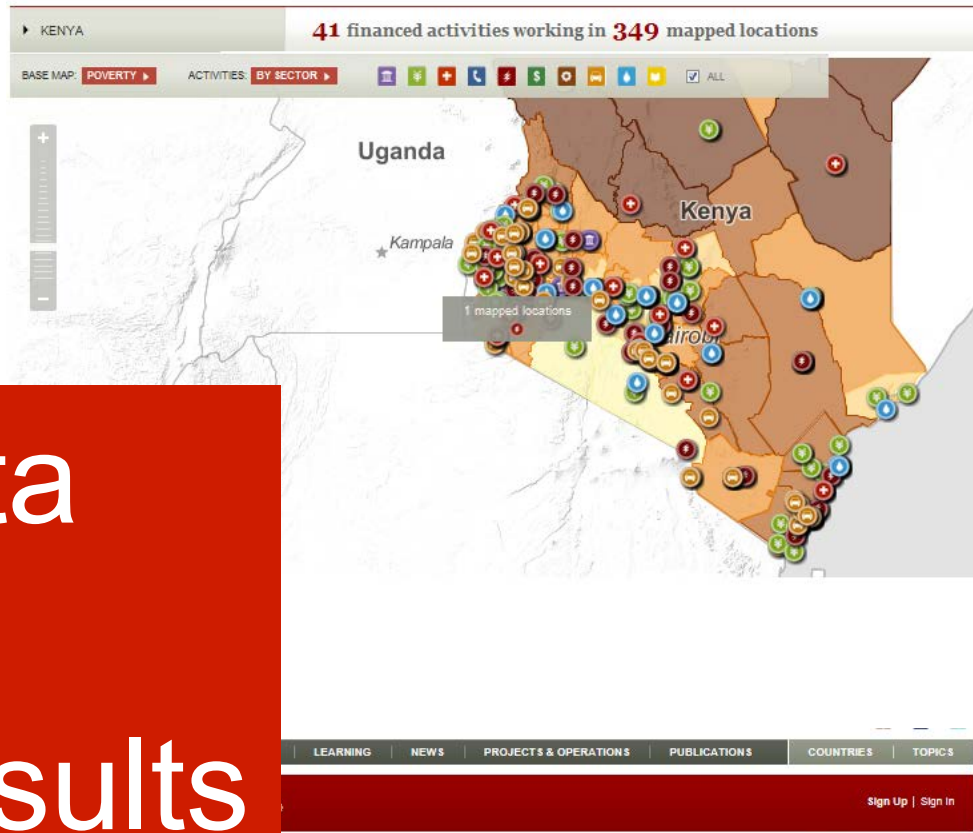
113% 2005

Kenya
Sub-Saharan Africa
Low Income

CO2 emissions (metric tons per capita)

0.3 2005

Kenya
Sub-Saharan Africa
Low Income



Operational Data Finances Mapping for Results

- Country Summaries
- World Bank Summary
- Financial Intermediary Funds (FIFs)
- IDA/IBRD/IFC Trust Funds

- REFINE BY:
- View Types
 - Datasets
 - External Datasets
 - Filtered Views
 - Charts
 - Maps
 - Calendars
 - Forms
- Categories
- Accounting and Control
 - Budget

Open Financial Data

Where has the World Bank disbursed money recently? What global funds does the World Bank manage? What is the World Bank's balance sheet? Explore raw data about the World Bank's finances — slice and dice datasets; visualize data; share it with other site users or through social networks; or take it home with a mobile app. Read more about this site »

MOBILE APP

Find and share loans and credits data - and report to the Bank. Download »

Showing 10 of 1312

Name	Popularity	Type	RSS
ARTF Paid-in Contributions by Donor by FY of Receipt ARTF Contributions by Donor by FY of receipt. Should be comparable to tables in this report: http://siteresources.worldbank.org/INTAFGHANISTAN/Resources/Afghanistan-Reconstructional-Trust-Fund/Final_ARTF_Financial_Status_Memo_july_22_2011.pdf	61 views	T	RSS
ARTF Paid-In Contributions by Donor FY2003-11 Tree This dataset provides a summary of the total funds received from donors for Trust Funds on the form of cash, promissory notes or other instruments acceptable to the World Bank Group entity administering the Trust Fund. The summary is based on the fiscal year of receipt. Data is provided at the individual Trust Fund level. All definitions should be regarded as provisional and not final, and are subject to revision at any time. In fulfilling its responsibilities, the World Bank as Trustee complies with all sanctions applicable to World Bank transactions.	46 views	T	RSS

BROWSE

- All of the OKR
 - Collections
 - Authors
 - By Publication Date
 - Topics
 - Titles
 - Author profiles

Advanced Search

OTHER

- About
- Terms of Use
- FAQ

Site Statistics

RESOURCES

- Open Access Policy
- Access to Information Policy
- Open Data
- Open Development
- Documents & Reports

STAY CONNECTED

- Facebook
- Twitter


RSS FEEDS


Subscribe to the Open Knowledge Repository RSS


Search




New Publications

- 

Title: Doing Business 2013 : Smarter Regulations for Small and Medium-Size Enterprises
Author: International Finance Corporation; World Bank
Date: 2013
Abstract: Tenth in a series of annual reports comparing business regulation in 185 economies, Doing Business 2013 measures regulations affecting 11 areas of everyday business activity: Starting a business, Dealing with construction ...
- 

Title: Localizing Development : Does Participation Work?
Author: Mansuri, Ghazala; Rao, Vijayendra
Date: 2013
Abstract: The Policy Research Report Localizing Development: Does Participation Work? brings analytical rigor to a field that has been the subject of intense debate and advocacy, and billions of dollars in development aid. It briefly ...
- 

Title: Economic Mobility and the Rise of the Latin American Middle Class
Author: Ferreira, Francisco H.G.; Messina, Julian; Rigolini, Jamele; López-Calva, Luis-Felipe; Lugo, Maria Ana; Vakis, Renos
Date: 2013
Abstract: After decades of stagnation, the size of Latin America's middle class recently expanded to the point where, for the first time ever, the number of people in poverty is equal to the size of the middle class. This volume ...
- 

Title: Public Works as a Safety Net : Design, Evidence, and Implementation
Author: Subbarao, Kalanidhi; del Ninno, Carlo; Andrews, Colin; Rodríguez-Alas, Claudia
Date: 2013

Open Knowledge Repository

Open Government Partnership

Kenya officially joined OGP in April 2012. Kenya's commitments include: Improving Public Integrity, Election Management, Improving Public Integrity, Election Management, Kenya Open Government Partnership, More effectively managing public resources, Public involvement in Budget Preparation, Improving Public Services, Government of Kenya's End-to-End Initiatives, Transparency and Accountability, Public participation in the area of essential services.

COUNTRY COMMITMENTS

Latest Datasets and Views

- Poverty Rate, by District
- County Urbanization: Nairobi
- Health Facilities
- County Expenditures by Administration 2002-3 to 2008-9
- County Urbanization: Kiambu

Health Facility Chart

This chart shows the Health Facilities distribution across the Country.

KCPE Exam Scores

From the Kenya National Examinations Council, this data shows School KCPE exam results in 2009-2010.

GoK shared services

GoK End to End Services provides a comprehensive guide on how to acquire services that are provided by the Government of Kenya.

Counties

Information on the 47 Counties can be found here. Easily find data sets relating to a specific County.

Developer? Click here!

Find out about our powerful developer APIs and tools.

Search & Browse Datasets and Views

Name	Popularity	Type	RSS
Poverty Rate, by District Poverty Rate by District	16,514 views		

date.gov.md
Portalul datelor deschise

RO EN RU

Caută în: seturi de date pagini

Caută...

TE APLICĂȚII INDICATORI NOUȚĂȚI IMPLICĂ-TE

I.S. GĂRILE ȘI STAȚIILE AUTO
Ministerul Transporturilor și Infrastructurii Drumurilor al Republicii Moldova

Orarul curselor auto interne și internaționale

RECOMANDAREA ZILEI

[Lista societăților pe acțiuni în c...](#)

SETURI DE DATE NOI

- [Lista Instituțiilor Concertistic...](#)
- [Lista Bibliotecilor RM](#)
- [Raport statistic centralizator p...](#)
- [Activitatea Bibliotecilor public...](#)
- [Distribuirea ajutoarelor materia...](#)

TU POȚI SĂ NE AJUȚI să îmbunătățim portalul date.gov.md!

Motorul de căutare nu este eficient? Găsești greu datele pe care le cauți? Ai sugestii la funcționalități noi care pot fi adăugate? PARTICIPĂ la testare și scrie-ne ce nu funcționează sau ce am putea îmbunătăți. Cu ajutorul tău noi vom optimiza portalul pentru ca tu să găsești mai repede datele pe care le cauți! Lasă un comentariu despre îmbunătățirea pe care o dorești! Accesează [link-ul](#) și implică-te!

TOP MINISTERE

- [Ministerul Sanatatii](#)
- [Biroul National de Statistica](#)
- [Ministerul Afacerilor Interne](#)

TOP SĂPTĂMÎNĂ

- [Lista adreselor instituti... \(103\)](#)
- [Catalogul de Date cu cara... \(93\)](#)
- [Căminul din Republica... \(7\)](#)

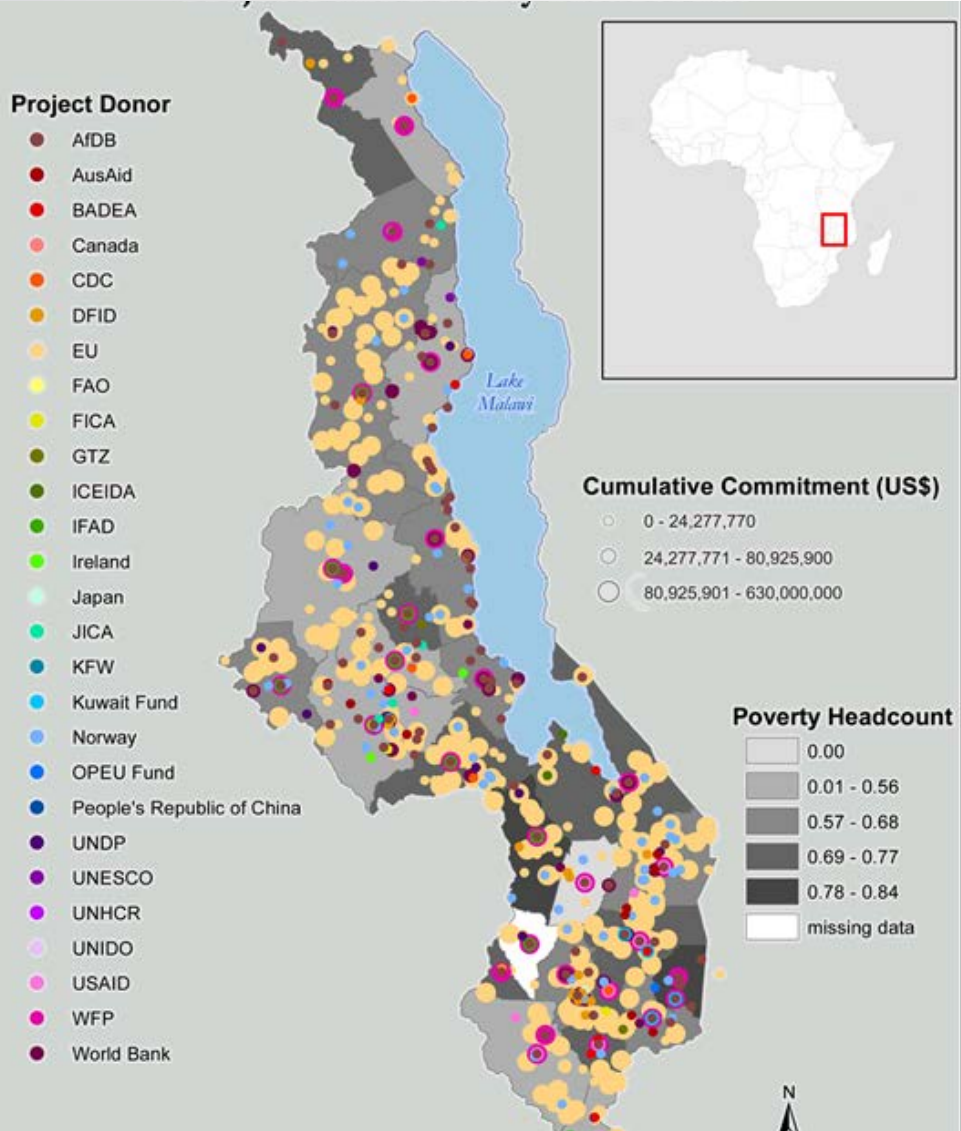
TOP POPULARITARE

- [Lista comisaritatelor de p... \(4569\)](#)
- [Informația privind persoa... \(2412\)](#)

Open Data in Partner Countries



OPENAID PARTNERSHIP



Open Aid Data

Challenges

- Incentives to publish data?
- Privacy issues, in particular micro-data and private sector data
- How to mainstream?
- How to measure impact?
- Does open data create new inequalities?
- Do we create powerful data monopolies?

Johannes Kiess
World Bank Innovation Labs
jkiess@worldbank.org